

What is DCES?



Delivering Clean Energy Solutions (DCES) is a community program offering energy efficient, high quality and cost effective clean energy solutions for your home.

DCES will facilitate the purchase, installation and commissioning of clean energy solutions for at least 1,000 homes across northern metropolitan Melbourne, saving residents money and reducing greenhouse emissions by up to 2,300¹ tonnes annually.

We've done the hard work for you – selecting preferred providers of

- solar electricity
- solar hot water systems
- electric bicycles

We've negotiated discount prices to save you money and energy in your home and community.

DCES is available to residents of municipalities within the Northern Alliance for Greenhouse Action (NAGA) region, including cities of Banyule, Darebin, Hume, Manningham, Melbourne, Moreland, Whittlesea, Yarra and Nillumbik Shire Council.

DCES is project managed by Moreland Energy Foundation in partnership with NAGA member councils and the Yarra Energy Foundation – and supported by the Victorian Government's Sustainability Fund, managed by Sustainability Victoria.

Interested?

Register your interest or find out more about the DCES community program, visit www.dces.mefl.com.au or call us on **9385 8585**.

Reducing greenhouse emissions by up to 2,300 tonnes annually is the equivalent of taking almost 600 cars off the road.²

1. Source: MEFL deemed savings analysis.

2. Reference provided by Moreland Energy Foundation analysis.

What's inside

What is DCES?

DCES – the basics

Solar hot water

Solar electricity

Electric bicycles



To register your interest or find out more about the DCES program:

Visit our website
www.dces.mefl.com.au
and register your
interest online

Call us on **9385 8585**
and register your
interest over the
phone

Join us for an
information session
to find out how
to get clean energy
in your home.

OR

OR

A list of information sessions can be found at www.dces.mefl.com.au or on participating council websites.

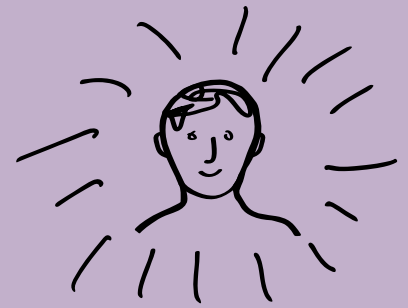
DCES. Delivering Clean Energy Solutions.



DCES. Delivering Clean Energy Solutions. DCES is available to residents of municipalities within the Northern Alliance for Greenhouse Action (NAGA) region, including Cities of Banyule, Darebin, Hume, Manningham, Melbourne, Moreland, Whittlesea, Yarra and Nillumbik Shire Council. DCES is project managed by Moreland Energy Foundation in partnership with NAGA member councils, Yarra Energy Foundation and supported by the Victorian Government Sustainability Fund. www.dces.mefl.com.au

Electric bicycles

What's in it for me?



Easybike Australia will supply and deliver electric bicycles. Product descriptions, prices and specifications on these pages refer to the standard step-through and crossbar frame (folding frame also available).

Overview

Electric bikes are relatively new to Australia but well established in Europe. The Easybike Easymax is the latest model French designed electric bicycle.

Riding an electric bicycle is just like riding a normal bicycle, except you've got an electric motor on hand when you need it – eg: riding up hills or into a strong headwind, so you arrive fresher.

Electric bikes are ideal for commuting and if replacing a second car offers significant cost and greenhouse gas savings.

What's on offer

Easybike Easymax electric bike available in step-through, crossbar frame.

Price \$1,457 (inc. GST)

retail price \$1,899

Folding frame also available \$1,278 (inc. GST)

What's included

- Blue tube (puncture proof tyre) rear tyre
- Front and rear lights
- Rear carry rack
- Bell, lock
- Tool kit
- RACV Bike Assist 1 year membership
- Free first service
- Free delivery within NAGA region in business hours
- 45 minute induction and bike adjustment to suit you
- Document wallet with user manual, service booklet
- Long warranties
- Australia wide warranty and service network

Optional extras

1. Front tyre blue tube \$65
2. Helmet, heavy duty bike lock, safety jacket \$ 85
3. Rear pannier bags single \$85 double \$110
4. Additional charger \$35
5. Delivery after hours \$35

Payment options

A \$100 deposit to secure order and balance due on day of delivery. Payment by credit card, EFTPOS or direct debit.

Deposit refunded if cancelled prior to pre-delivery.

Shifting just 5% of car trips to bicycle could reduce greenhouse emission impacts by up to 8%.

Victoria Transport Policy Institute: Energy Conservation and Emission Reduction Strategies, <http://www.vtppi.org/tdm/tdm59.htm>

Electric bicycles

The benefits



Electric bikes provide the best of both worlds – you can pedal as much or as little as you like - it's your choice.

If you want the exercise use pedal power, or if you want to arrive at your destination fresh, need some extra help up a hill or in a headwind the battery assistance will be there when you need it.

Electric bikes are ideal for commuting and save significant greenhouse emissions especially if your electric bike replaces a second car.

A full battery recharge will cost as little as \$0.25c and if you have Greenpower or solar power at home you'll be travelling emission free.

Savings

There are huge savings to be made - both financially and environmentally - if you swap your car for an electric bike.

Say you make a 10km round trip each weekday throughout the year. If you ride the Easybike instead of driving a small car, you stand to save nearly \$300 in energy expenses and 280kg/CO₂-e) of greenhouse gases.

If you charge your Easybike with 100% GreenPower or have solar electricity at your home, your travel will be emission free!

Vehicle type	Yearly cost (electricity/fuel)	Yearly greenhouse gases (Kg/CO ₂ -e)
Easybike ¹¹ - charged by 100% GreenPower	\$ 27.70 ¹⁴	0
Easybike ¹¹ - charged by standard black power	\$ 22.60 ¹²	124 ¹³
Average small car ¹⁵	\$ 319.30 ¹⁶	405 ¹⁷



11. Calculated on 40km per full charge of battery. Note that distance per charge may vary depending on the weight of the rider, the terrain, headwind and tyre pressure.
 12. Assumed electricity rate is \$0.22/kWh for standard black power
 13. Calculated with an emissions factor of 1.21kg Co₂-e/kWh
 14. Assumed electricity rate is \$0.27/kWh for 100% GreenPower
 15. Calculated on a Toyota Corolla, Ascent Liftback 5 dr, man, 5sp, 1.8i, 2001 model.
 16. Calculated on a fuel price of \$1.445/L
 17. Calculated with an emissions factor of 66.7kg CO₂-e/GJ
- Figures provided are a guide only
Image crossbar frame (step-through and folding available)

Electric bicycles

The details



What	The details
The frame	Easymax step-through or 'womens' frame and crossbar or 'mens' frame, aluminium alloy 6061 (51 cm sized frame)
Production	Produced in China under the auspice of the ISO 9001. Complies with Australian Standards
Weight	23.5kg
Wheel	26 inch (66cm) Blue tube 'puncture proof' rear wheel fitted as standard, front wheel optional extra.
Gears	6 speed Shimano
Battery	36V 10ah lithium ion Battery life >500 charges to 70%
Motor	200watt brushless motor, with 3 stage controller, top speed 25kph
Range	Up to 40km dependent on weight of rider, terrain and mode of pedal assist used
Battery charger	Connects to a standard electrical power point.
Brakes	Front and rear V brakes
Included accessories	Front and rear lights, Rear carry rack Bell Lock
Service	Free service in first 3 months of ownership (must be completed within 3 months of purchase) all bike components and electrical components checked and adjusted.
RACV membership	1 year RACV Bike assist membership – provides up to 8 call outs with a taxi home for all issues other than a flat tyre.
Delivery	<ul style="list-style-type: none"> • Free delivery to NAGA area during business hours. • \$35 delivery charge to NAGA area outside of business hours.
Instruction and training	45 minute induction upon delivery: Bike adjusted for correct riding position, safe riding techniques, instruction on optimising battery charge, basic maintenance. You will receive a vehicle document wallet with manual, service book and service contact details.
Warranties	<ul style="list-style-type: none"> • bike frame 5 years • battery lithium ion 2 years • all electrical components – motor, controller, controls 2 years • brakes 6 months • Blue tube - 20 year guarantee

Specifications - what's included

Electric bicycles

FAQ



General Q&A for electric bicycles

Question	Answer
Do I need a licence?	No. Australian regulations state that as long as the power output of the motor is 200w or less no license is required.
Where can I ride an electric bicycle?	You can ride an electric bike wherever it is legal to ride a conventional bike, on shared paths, bike paths or the road network.
How fast can I go?	All Easybikes are limited to a speed of 25 kph - the top speed for electric bikes as regulated by Australian law.
How far can I go on a full charge?	You can expect to travel around 40km but the range depends on a number of factors including: weight of the rider, how hilly the terrain is, how strong the headwind is and tyre pressure. Range is also affected by use of the throttle.
Do I need safety gear?	The only safety gear that is legally required is a helmet that complies with Australian regulations however we do recommend that you wear a high visibility vest to help other road users see you. Front and rear lights and a bell fitted included as a standard bike.
Can I ride the bike without peddling?	Yes you just use the throttle but it is recommended that you use both pedal power and electric assistance to use the power most effectively. When going up hills pedal power will be required to maintain your speed.
What is blue tube?	Blue tube is a new product that replaces the conventional tube. It is a solid and pliable material that provides a comfortable ride and is impossible to puncture.

Battery

How far can I go on one charge?	You will have a range of about 40 km per fully charged battery (if you use battery power alone to travel). The distance you can travel depends on the terrain, eg: if it's hilly, the weight of the rider and road conditions.
What is the life of the battery?	A battery will normally last for more than 500 recharges.
How long does the battery take to charge?	4-5 Hours for a full charge on a completely flat battery.
Do I need to recharge the battery after every ride?	No, but it helps prolong the battery life if you charge the battery regularly.
How much does it cost to recharge the battery?	Approximately \$0.25c per full charge. The battery recharger uses about the same electricity required to recharge a lap top battery.
Can the battery be recycled?	Yes, depleted batteries are returned to the factory for recycling.
How much does a new battery cost?	Replacement batteries cost \$350 and can be ordered through Easybike Australia.

Servicing

Can I go to a regular bike shop to have an electric bike serviced?	Any bike shop can look after the "bike" components such as gears, brakes, chain pedals etc however any work related to the electric system should be referred back to Easybike Australia on 1300 594 567.
When do I need to change the brake pads?	It depends on how you ride the bike. If you ride the bike 'aggressively' the brake pads will need changing regularly - perhaps every few months. Normally brake pads last around a year.
Who do I call for any warranty claims?	All warranty claims should be directed to Easybike Australia on 1300 594 567.

Electric bicycles

FAQ



Support

What happens if my bike stops working?	Call Easybike Australia on 1300 794 567. They will help you determine what the problem is and what needs to be done to fix it. Or If you are on the road and a problem occurs call RACV Bicycle Assist. They will provide on road support and if they are unable to get you going they will arrange for a taxi to take you and your bike home, (up to 8 taxi rides per year).
How can I find out what is the safest bicycle route for me to commute to work?	TravelSmart Victoria produce a number of maps with advice on sustainable transport including cycle routes: www.transport.vic.gov.au/projects/sustainable/travelsmart/travelsmart-resources/travelsmart-maps Contact your local council for advice on local cycle routes and maps.
Other resources	Bicycle Network Victoria is an organisation supporting cycling and is a great resource of information: www.bv.com.au Get out of town and try out a rail trail: www.railtrails.org.au

Process / Troubleshooting

How long is this offer for?	Until 30 March 2012
What if I have feedback on the provider?	Contact Moreland Energy Foundation on 9385 8585 or www.mefl.com.au MEFL will contact you after your delivery is complete to collect all feedback.

Research shows vehicle emissions are highest when the engine is cold, and thus short trips by car (less than 5 km) produce higher emissions per kilometre than longer trips. This makes cycling a good environmental option for short trips in particular.

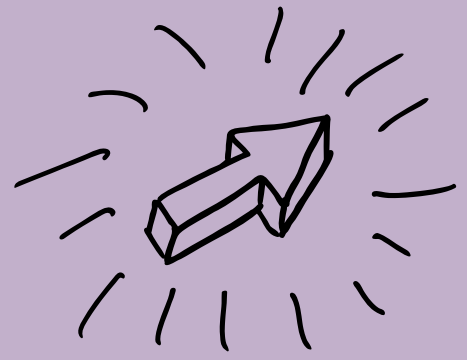
<http://www.environment.gov.au/soe/2006/publications/drs/indicator/408/index.html>

Want more information?

Call **9385 8585** or go to www.dces.mefl.com.au

Electric bicycles

What's the process?



The chart below outlines the easy five step process from registration to post-purchase.

1

Register interest

2

Take a test ride

3

Pay deposit

4

Delivery

5

Post purchase

What happens

- Register for your free no obligation quote:
www.dces.mefl.com.au
OR
Call – Moreland Energy Foundation 9385 8585
- Once registered Easybike Australia will call you to answer your questions, take your booking or make an appointment for a test ride.

- Come to a demonstration day (check website for details www.dces.mefl.com.au)
OR
- Book a test ride when you register.

- \$100 deposit required to secure your order
- Balance due on day of delivery. Payment by credit card, EFTPOS or direct debit.
- Deposit refunded if cancelled prior to pre-delivery check.

- Free delivery during business hours to residents in the NAGA region or \$35 at other times.
- 45 minute induction upon delivery: Bike adjusted for correct riding position, safe riding techniques, instruction on optimising battery charge, basic maintenance
- Deliveries will commence from 16 January 2012
- If you'd like to give an Easybike for Christmas there is a special gift card to give on Christmas day

- MEFL will undertake feedback and evaluation with program participants and notify you of other offers. You can call us any time for further support 9358 8585
- Servicing or warranty issues contact Easybike Australia
- For breakdown service call RACV Bike Assist for breakdown assistance
- Join your local local council sustainable transport or bicycle users group for further support in your area.

Over half of all car trips in Melbourne are less than 5 km. These are convenient distances by bicycle.

www.bv.com.au/media/vanilla/file/VictorianCyclingStrategy.pdf P17

Want more information?

Call **9385 8585** or go to www.dces.mefl.com.au